

Operating Instructions



A92079 Tie-Lok II Tool

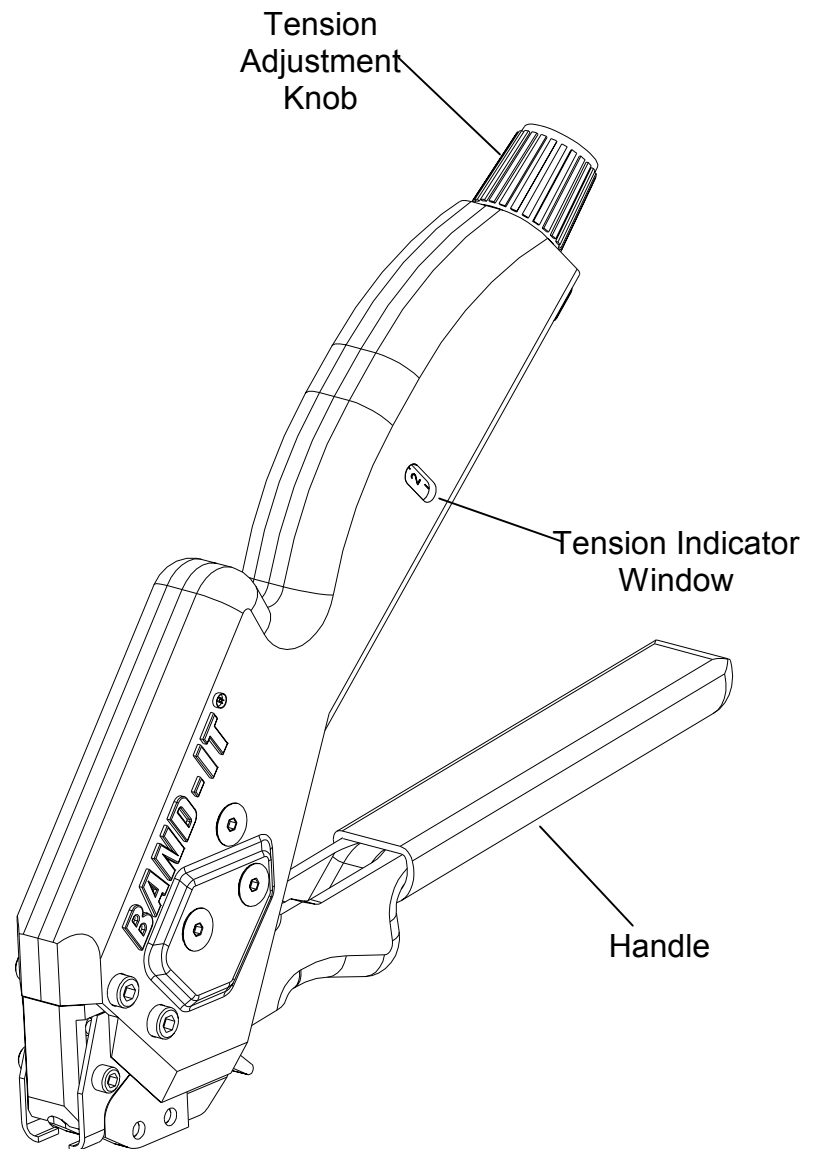
Warning:

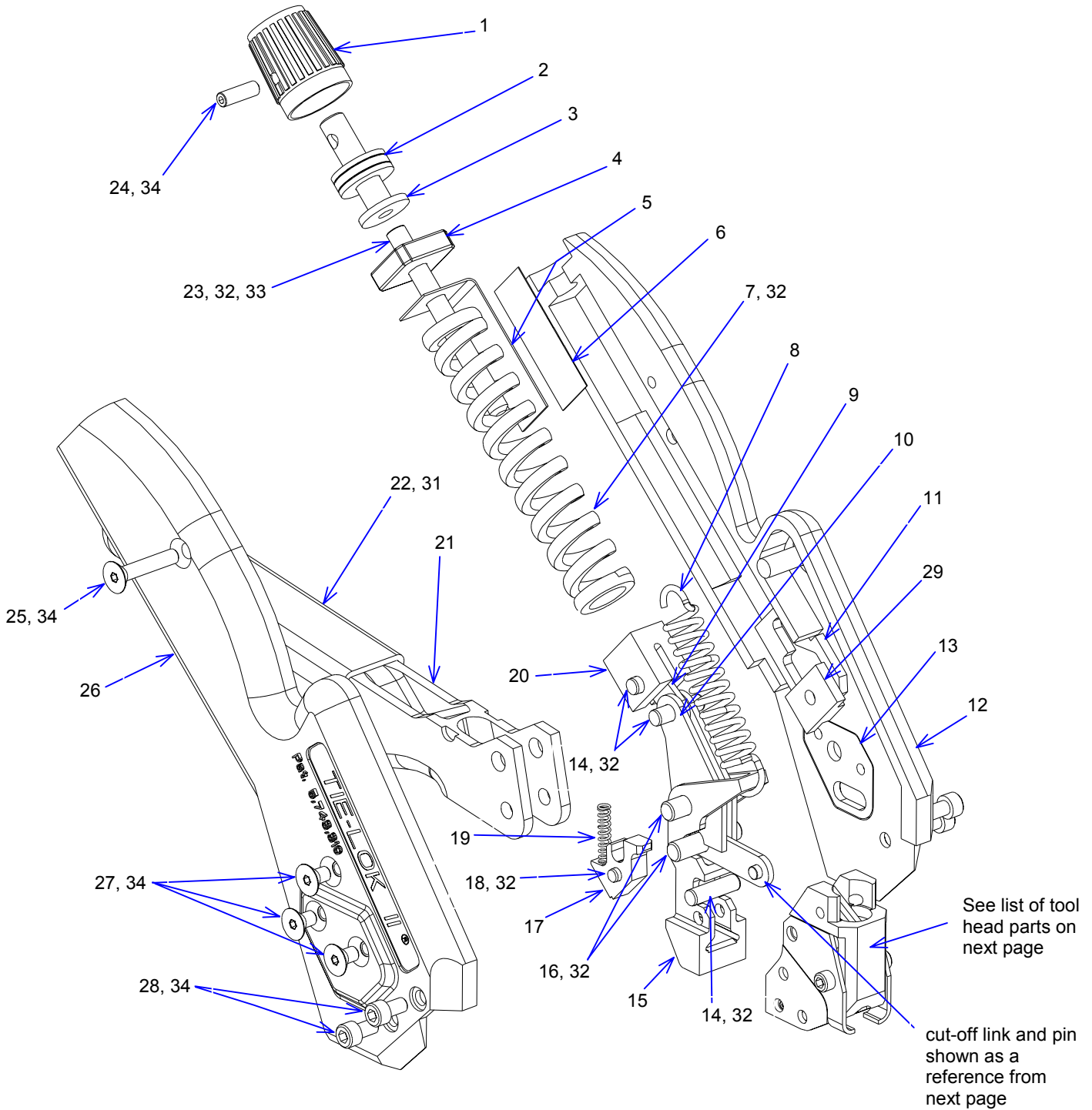
Always wear safety glasses when operating hand tool.

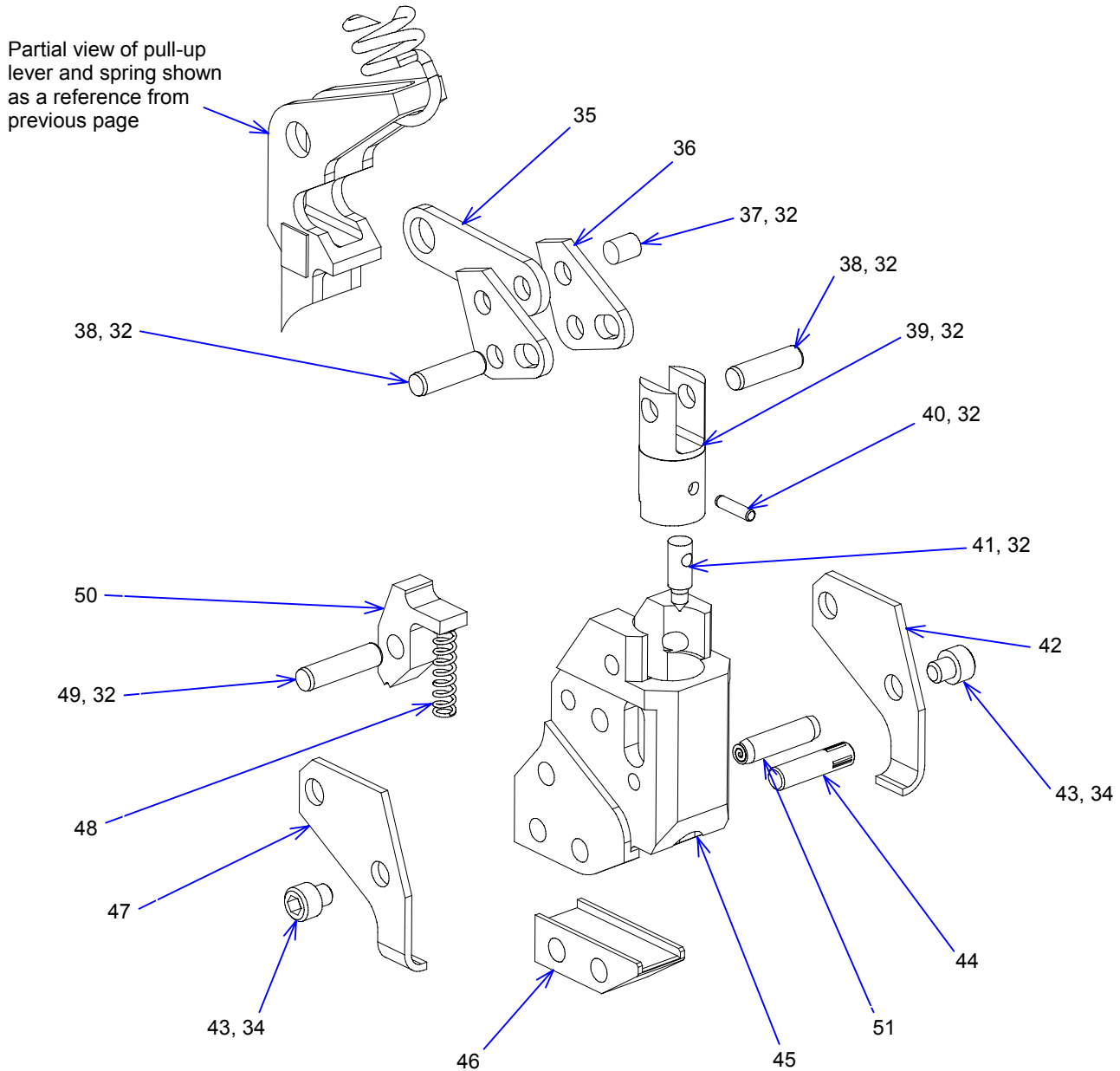
Instructions:

1. Turn tension adjustment knob until desired tension setting is displayed in tension indicator window. Space between numbers counts as one-half setting. See step 6.
2. Extend handle open to release gripping mechanism and insert clamp tail into tool through front load entry.
3. Squeeze handle repeatedly to tighten band around object. Be sure to release handle completely to use full pull-up stroke of tool. Buckle must be secure against the tool head and nestled between the two retention clips. Once the preset tension has been reached, the handle will no longer release completely.
4. To cut-off excess clamp tail, squeeze handle one last time.
5. The tool must be reset by, extending the handle out until it snaps into place, the tool will be ready to apply the next clamp.
6. Tension Setting Range:

.250 Smooth I.D. Tie-Lok 0 – 8







Repair Parts



A92079 Tie-Lok II Tool

Item	Band-It #	Qty	Description
1	M53387	1	Knob, adjustment
2	M53287	1	Bearing, thrust (3 pieces)
3	A92577	1	Cap, tension
4	A93487	1	Block, tension
5	A93587	1	Indicator, tension
6	A92387	1	Decal, tension indicator
7	K02187	1	Spring, die
8	A91787	1	Spring, extension
9	A95487	1	Link, tension
10	A92267	2	Arm, tension
11	A95387	2	Plate, tension
12	K93487	1	Body, left, black
13	A91477	2	Plate, body
14	A73587	3	Pin, dowel, 5/32 x 9/16 lg
15	A91387	1	Lever, pull-up, front load
16	A94887	2	Pin, straight, 3/16 x .780 lg
17	A91187	1	Gripper, pull
18	K97487	1	Pin, .125 x .313 lg
19	A93887	1	Spring, 1/8 x 5/8, 25#
20	A92487	1	Plunger, tension
21	K97587	1	Handle
22	M50387	1	Grip, textured, blue
23	A94488	1	Screw, set, #10-24 x 2.00 lg
24	A85687	1	Screw, set, #6-32 x 7/16 lg
25	A96087	1	Screw, flt-hd, #6-32 x 3/4 lg
26	K93587	1	Body, right, black
27	A91987	6	Screw, flt-hd, #6-32 x 1/4 lg
28	M54587	4	Screw, cap, #6-32 x 1/4 lg
29	K57887	2	Pad, centering
30			
31	-	-	Adhesive, cyanoacrylate
32	-	-	Grease, extreme pressure
33	-	-	Red Loctite (high strength)
34	-	-	Blue Loctite (med. strength)
35	A92177	1	Link, cut-off
36	A94987	2	Lever, cut-off
37	A94687	1	Pin, straight, 1/8 x 3/16 lg
38	M01887	2	Pin, dowel, 1/8 x 7/16 lg
39	A97187	1	Knife, Tie-Lok II
40	A94587	1	Pin, dowel, 1/16 x 1/4 lg
41	A91887	1	Dimple punch
42	A94287	1	Clip, left
43	A49787	2	Screw, cap, #4-40 x 1/8
44	A93977	1	Pin, Groove, 1/8 x 9/16 lg
45	A92677	1	Tool head
46	A93677	1	Blade, Tie-Lok II
47	A94387	1	Clip, right
48	C09587	1	Spring, 1/8 x 1/2, 13#
49	A84487	1	Pin, dowel, 1/8 x 1/2 lg
50	A91287	1	Gripper, hold
51	A90987	1	Pin, spirol. 1/8 x 1/2 lg



Unless sold without warranty, BAND-IT products are warranted to be free from defective workmanship and/or materials for a period of one year from the date of purchase. Warranty on tools is void if clamps not meeting BAND-IT specifications are used, or if the tool is altered or abused in any manner, including lack of lubrication or used for any purpose in any way not intended by the manufacturer as specifically covered by the instructions accompanying the tool. Specific tool components, such as knives, blades and grippers, which are subjected to normal wear, are excluded from this coverage, as component life depends on usage of the tool. Tools that are repaired or sold as used by BAND-IT are subject to a warranty of 90 days from date of shipment. **NO OTHER WARRANTY OF ANY KIND WHATSOEVER, EITHER ORAL OR WRITTEN, INCLUDING IMPLIED WARRANTY OF MERCHANTABILITY, FITNESS FOR A PARTICULAR PURPOSE, OR OTHER WARRANTY OF QUALITY IS EITHER EXPRESSED OR IMPLIED FOR THE PERFORMANCE OF BAND-IT PRODUCTS. BAND-IT SHALL NOT BE LIABLE FOR SPECIAL, INCIDENTAL, AND/OR CONSEQUENTIAL DAMAGES, EVEN IF BAND-IT HAS BEEN NOTIFIED OF THE POTENTIAL OF SUCH LOSS OR CLAIM. (8/02)**

Covered under US Patent #5743310